



INTRODUCTION TO SHODWE COMPANY



Shodwe Company is a leader in green energy solutions, committed to driving sustainable practices across the globe.

Our mission is to innovate and deliver cutting-edge renewable energy technologies that reduce carbon footprints and foster a cleaner environment.



VISION & MISSION



Vision:

To be the world's most trusted and impactful green energy provider, ensuring a sustainable future for all.

Mission:

To innovate and implement renewable energy solutions that are efficient, reliable, and accessible.



OUR HISTORY IN GREEN ENERGY

Since our inception in 2012, Shodwe Company has been at the forefront of renewable energy innovation. Our journey began with small-scale solar projects and has expanded to include large wind farms, hydroelectric power, and advanced battery storage solutions.



Timeline:



2012

Company founded



2014

First solar project launched



2016

Expansion into wind energy



2019

Introduction of hydroelectric power solutions

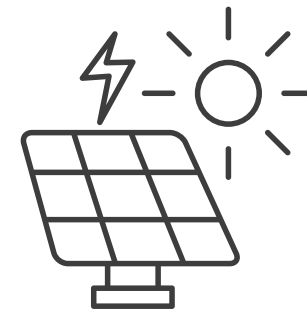
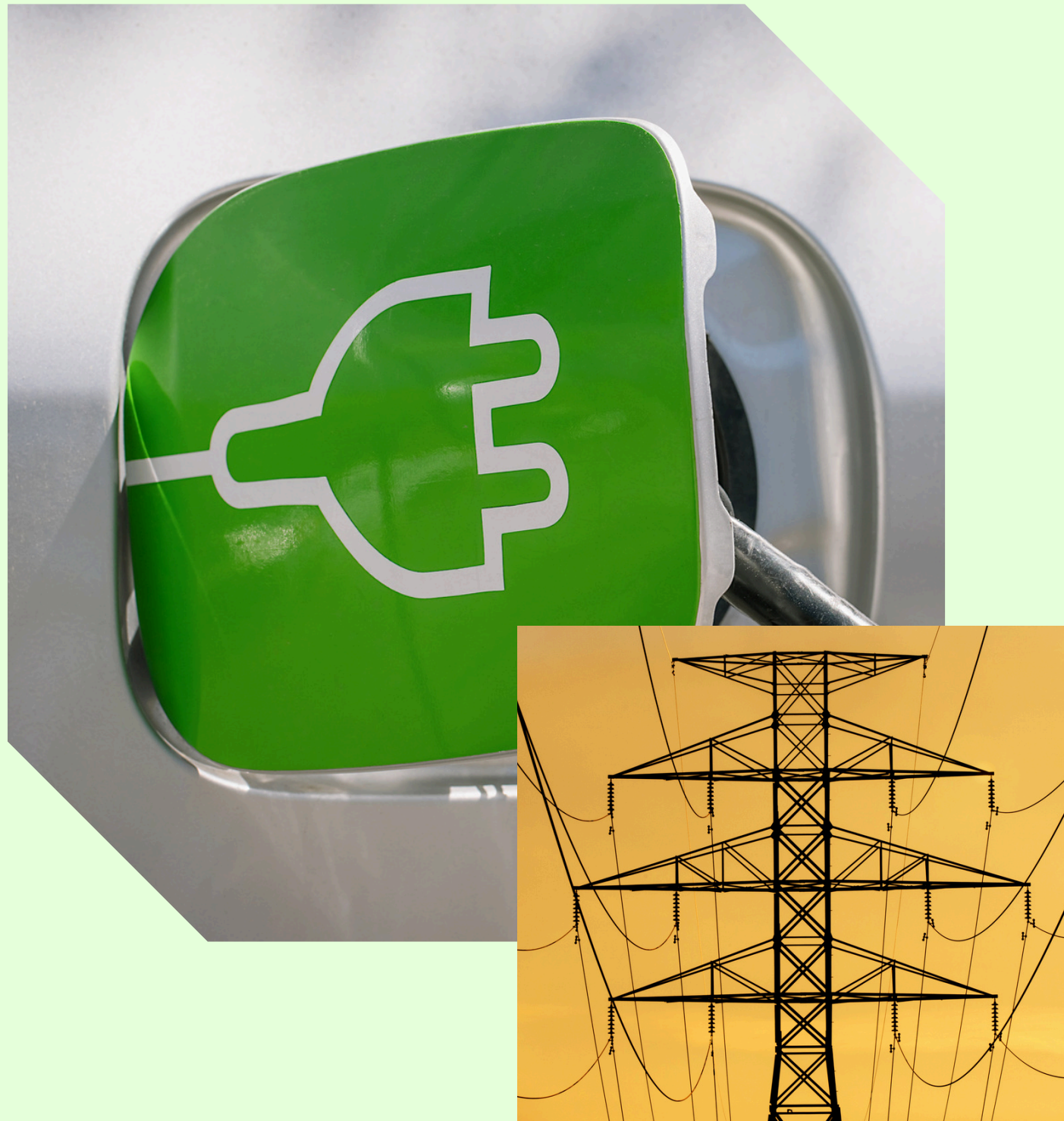


2022

Development of battery storage technology

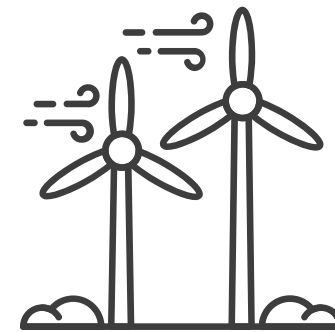


GREEN ENERGY SOLUTIONS



SOLAR ENERGY:

High-efficiency solar panels and photovoltaic systems for residential, commercial, and industrial use.



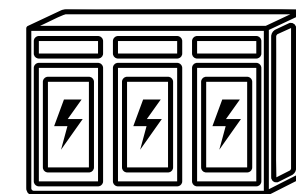
WIND ENERGY:

Advanced wind turbines and wind farms designed for optimal energy capture and minimal environmental impact.



HYDROELECTRIC POWER:

Innovative hydroelectric systems harnessing the power of water to generate clean energy.



BATTERY STORAGE:

Cutting-edge battery storage solutions ensuring reliable and efficient energy distribution.

BENEFITS OF GREEN ENERGY



Environmental Impact:

- Reduction in greenhouse gas emissions
- Preservation of natural resources



Economic Advantages:

- Job creation in the renewable energy sector
- Long-term cost savings for consumers and businesses



Health Benefits:

- Improved air quality
- Reduction in health issues related to fossil fuel pollution



OUR GOALS



SHORT-TERM GOALS:

- Expand solar and wind energy projects by 20% in the next two years
- Increase battery storage capacity by 15%



LONG-TERM GOALS:

- Achieve net-zero carbon emissions by 2030
- Develop new technologies to harness alternative renewable energy sources



OUR TEAMS



JOHN DOE

CEO & Founder



JANE SMITH

Chief Technology
Officer



EMILY JOHNSON

Head of Research &
Development



ADAM REEDS

Director of Operations



PORTFOLIO OF PROJECTS



SOLAR PROJECTS

Larana Solar Farm:

- Located in California, this farm covers 500 acres with over 200,000 solar panels, powering 50,000 homes.
- Impact: Reduces 100,000 tons of CO2 annually, equivalent to planting 5 million trees.

Rimberio Community Solar Initiative:

- Decentralized rooftop solar installations in Riverside for residential & commercial buildings.
- Impact: Lowers energy bills by 30%, creates 200 green jobs.



WIND FARMS

Fauget Wind Farm:

- 150 wind turbines in the Midwest, optimized for low wind conditions, generating 300 MW.
- Impact: Powers 90,000 households, cuts 250,000 tons of CO2 yearly.

Thynk Unlimited Wind Project:

- 100 offshore turbines off Massachusetts coast, harnessing ocean winds.
- Impact: Provides energy for 120,000 homes, saves 400,000 tons of CO2 annually.



KEY POINTS & ACHIEVEMENTS

ACHIEVEMENTS

Award for Innovation in Renewable Energy (2023):

- Shodwe Company received this award for groundbreaking advancements in solar panel technology, increasing efficiency and reducing costs.

Certification for Environmental Excellence (2022):

- This certification from the Larana Green acknowledges our commitment to sustainable practices and reducing our environmental footprint.

KEY POINTS

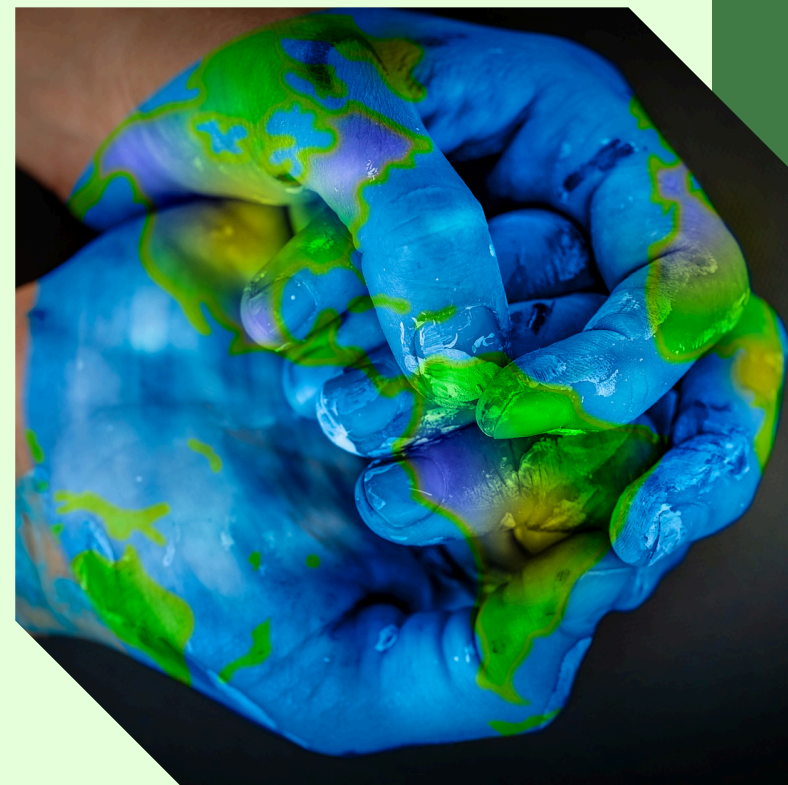
Over 5,000 MW of Renewable Energy Generated:

- Significant contribution to the global energy mix and reduced dependence on fossil fuels.

Reduction of 3 Million Tons of CO2 Emissions Annually:

- Equivalent to removing 650,000 cars from the road annually, showcasing our impact on climate change.

MARKET ANALYSIS & OPPORTUNITIES



Market Trends

Growing Demand for Renewable Energy:

- The global renewable energy capacity grew by over 260 GW in 2022, driven by increasing awareness of climate change and sustainability goals.

Government Incentives and Policies Supporting Green Energy:

- Policies such as the U.S. Inflation Reduction Act of 2022 offer significant tax incentives and grants, accelerating clean energy technology deployment.



Opportunities

Expansion into Emerging Markets:

- Rapid economic growth and increasing energy demands in Larana, Liceria, and Rimberio present substantial opportunities for renewable energy investments.

Development of New Renewable Technologies:

- Innovations like floating solar panels, offshore wind farms, and advanced energy storage systems are gaining traction, and Shodwe Company is at the forefront of these advancements.

THANK YOU

Thank you for your interest in
Shodwe Company and our
commitment to green energy.
Together, we can create a
sustainable and prosperous future.

 www.reallygreatsite.com

